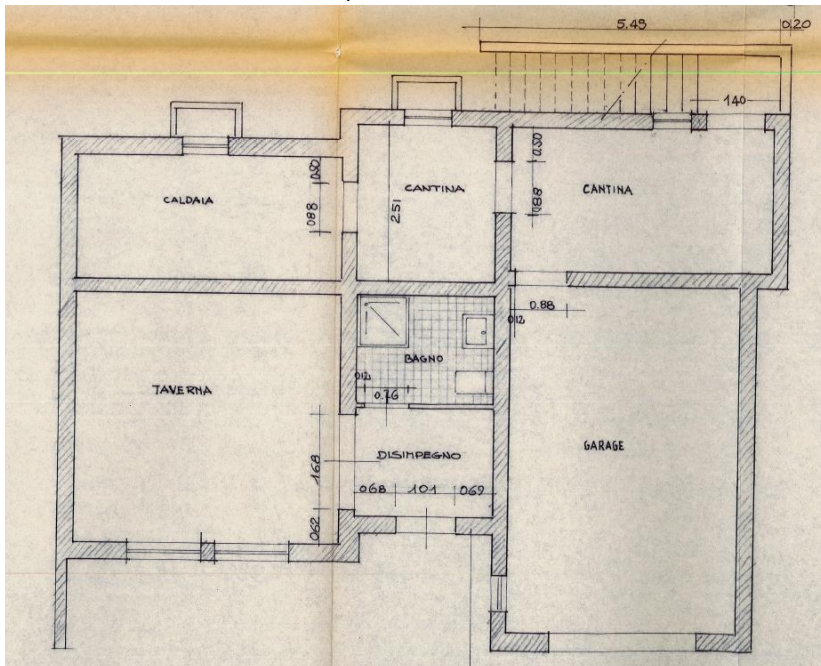


SUPERFICI

TOTALE LOTTO CIRCA 675 mq

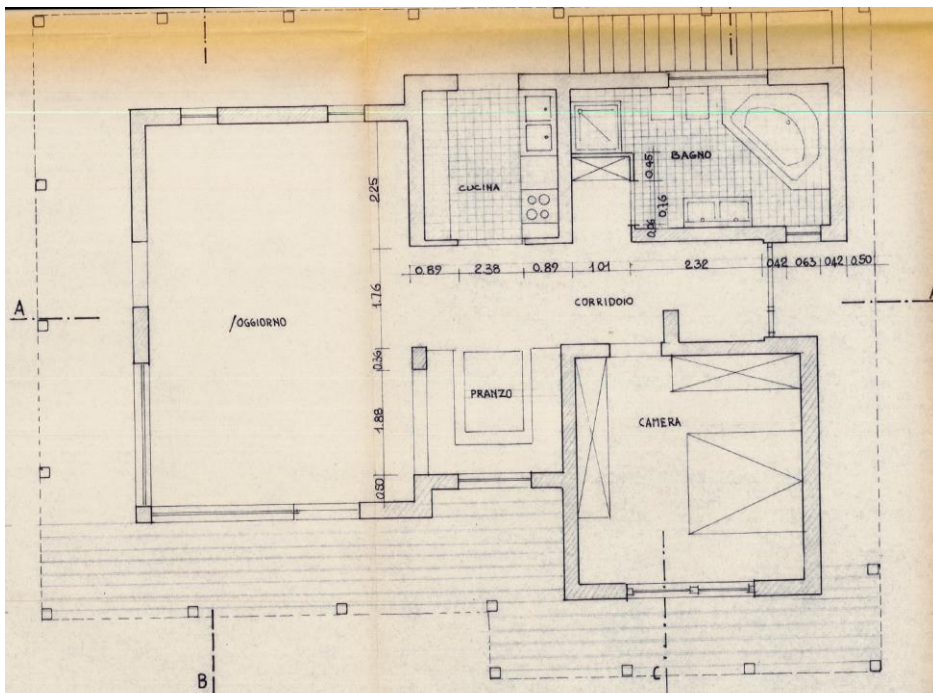
PIANO SEMINTERRATO:

- Garage 28.4 mq
- Abitabile 35 mq
- Vani accessori 35.4 mq



PIANO TERRA:

- Abitabile 97.8 mq
- Portico 41.5 mq
- Balcone coperto con portico 26.5 mq
- Piscina rotonda sup. circa 20 mq



STUDIO TECNICO BM - semplicemente costruire
MORANDI geom. BERNARDO

c.f. MRNBNR66E16H330B - p.iva 01815920986 - SDI SUBM70N
P.zza Montini n. 3 fraz. Priezzo, 25010, Tremosine S/G, BS Tel. 0365/918077, Cell.335/8174242
e-mail: geom.bernardomorandi@gmail.com PEC: bernardo.morandi@geopec.it web: www.geometravernardomorandi.com